



**Machinery Manufacturing& Raw Material Procurement**  
**Chemical Industry /Daily Chemical Industry / Metal Processing / EPC Projects**  
设备生产 & 原材料采购  
化工行业 / 日化行业 / 金属加工 / 项目总承包

**Anhui Mingzhi Chemical Equipment Engineering CO.Ltd.**  
安徽铭志化工设备工程有限公司

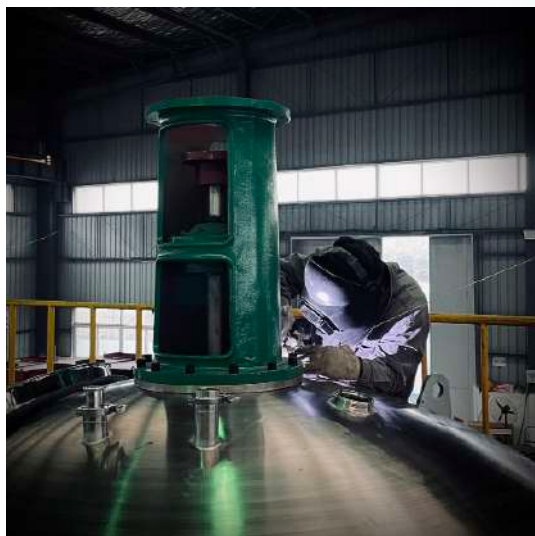




## TABLE OF CONTENTS 目录

Company Profile 公司介绍	4
Testimonies 客户评语	7
Chemical industry 化工行业	8
Daily Chemical Industry 日化行业	10
Metal Processing 金属加工	11
Equipment Fabrication& Installation / EPC 设备制造安装/项目总承包	12
Steel structure plant & Building design and construction 钢结构厂房和建筑设计建造	22
Raw Material Procurement 原材料采购	24





## About us 公司介绍

Anhui MINGZHI Chemical Equipment Engineering Co., Ltd. was established in July 2015, in Hefei, Anhui, China. It is based on the equipment installation and manufacturing company of Anhui DONGWAN Construction Group, which was founded in 2002. The resources of the new company continued the original one's configuration.

Anhui MINGZHI Chemical Equipment Engineering Co., Ltd. is a self-operated engineering equipment company, which has a standardized operating modes. It mainly focus on EPC of laundry detergent powder/liquid detergent/wet foaming alkali/Sulfonic acid production line, and has independent import and export management rights. We have experienced engineers who are equipped with professional knowledge and practical skills.

At the same time, the company mainly focuses on the chemical industry; Daily chemical industry; Equipment fabrication and installation; Metal processing; Raw material procurement; And undertakes the production / installation / commissioning of equipment. Such as bag filter, cyclone dust collector, mechanical filter, washing powder aging tank, slurry batching tank, granulator, belt conveyor, screw conveyor, high temperature butterfly valve, post blending mixer, and weightless scale, blending tank, dry/wet cyclone separator, mechanical filter, belt conveyor and LIW etc. The products are not only sold domestically, but also exported to the global market.

Since 2002, we have accomplished more than 200 projects and, the results of nearly all of it has been positively affirmed by our clients and partners from both domestic market as well as international market. We work with our clients in long lasting relationships that based on mutual trust and profitability.

Our business philosophy: "Owners' satisfaction is our pursuit". Our service philosophy: customer first, sincere service.

安徽铭志化工设备工程有限公司位于中国合肥，它是基于2002年成立的安徽东皖设备制造安装建筑公司于2015年7月延续其原始配置再次成立的。安徽铭志化工设备工程有限公司是一家具有规范化的作业模式的自营工程设备公司。它主要专注于化工行业；日化行业；设备制作及安装；金属加工；原材料采购；洗衣粉/液体洗涤剂/湿法泡花碱/磺酸生产线的总承包，并具有独立的进出口管理权。我们拥有经验丰富的工程师，他们具备专业知识和实践技能。同时，公司主要从事日化行业的设备生产。如袋式除尘器，旋风除尘器，机械过滤器，后配混合器，莱宁式搅拌配料罐，螺旋输送机，皮带输送机，失重秤等。产品不仅在国内销售，还出口到全球市场。

自2002年以来，我们已经完成了200多个项目，并且几乎所有项目的结果都得到了来自国内外市场的客户和合作伙伴的肯定。我们与客户建立长期互信的合作关系，并建立在互信互利的基础上。

我们的准则就是客户的满意是我们坚持的动力。我们服务的宗旨是客户至上，诚挚服务。







## Our Specialties 我们专注于

Designing, fabricating, installing  
and debugging production  
equipment of detergent powder/  
liquid detergent/sodium silicate/  
sulphonation and training staff

设计，制作，安装，调试洗衣粉，  
液洗，泡花碱和磺化的生产设备；  
以及培训员工

Non-standard Equipment  
fabrication& installation

非标设备的制作和安装

Manufacturing and installation  
of equipment and metal  
processing in chemical/daily  
chemical industry

化工/日化行业设备的制作安装以及  
金属加工

Designing & making & installing  
steel structure

设计和制作，安装钢体结构

Installing technical pipeline

工艺管道安装





# Testimonies 客户评语

## What Our Customer Say About Us 我们的客户如何评价

“We would like to appreciate your kind cooperation in order to install a part of our project equipment. Let us thank you and hope to have better business relationship in the near future”

### **PARS INTL. MFG. COMPANY**

“我们很感激你在安装我们项目中部分设备的合作与配合，请接受我们的感谢并且希望在不远的将来能够继续保持良好的合作”

**Pakshoo公司**

“We are very pleased with the behavior and altitude of Eng. Deng Thanks to all the team of Anhui Dongwan working in the project of AKA Detergent factory project. We have found them good experienced and hard working. We would like to thank the company and we look forward to have more cooperation in the future”

### **AL-AMOUDI FACTORY for Detergents & Personal Care Products**

“我们非常满意邓工程师的专业和态度，以及安徽铭志化工设备工程有限公司的所有员工在AKA洗衣粉工厂项目中的贡献；我们认为他们都很有经验，非常努力；我们想再次感谢贵公司并且期待未来有更多的合作。”

**AL-AMOUDI洗衣粉和个人护理产品公司**

“We would like to thank Anhui Mingzhi and engineers of the company; they have showed nothing but professionalism and responsibility during the ‘post-blending modification’ project.”

### **Myanmar Unilever**

“我们想要感谢安徽铭志化工设备工程有限公司的工程师；他们在‘后配改造’项目中的表现非常的专业并且负责。”

**缅甸联合利华**

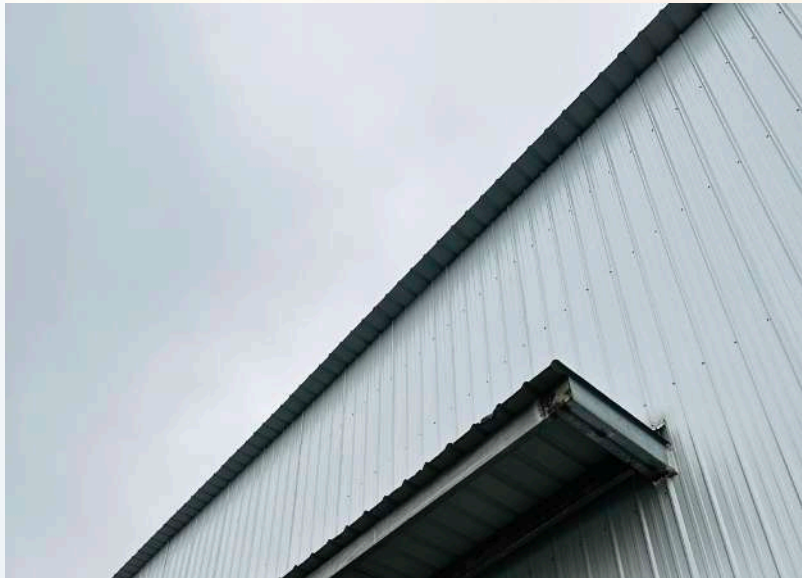
“It certainly was our pleasure to cooperate with Anhui Mingzhi Chemical Equipment Engineering Co.Ltd. We would love to thank you for your hard work and good services. We look forward to cooperate and work with you again.”

### **WAFIR FACTORY COMPANY – Saudi Arabia**

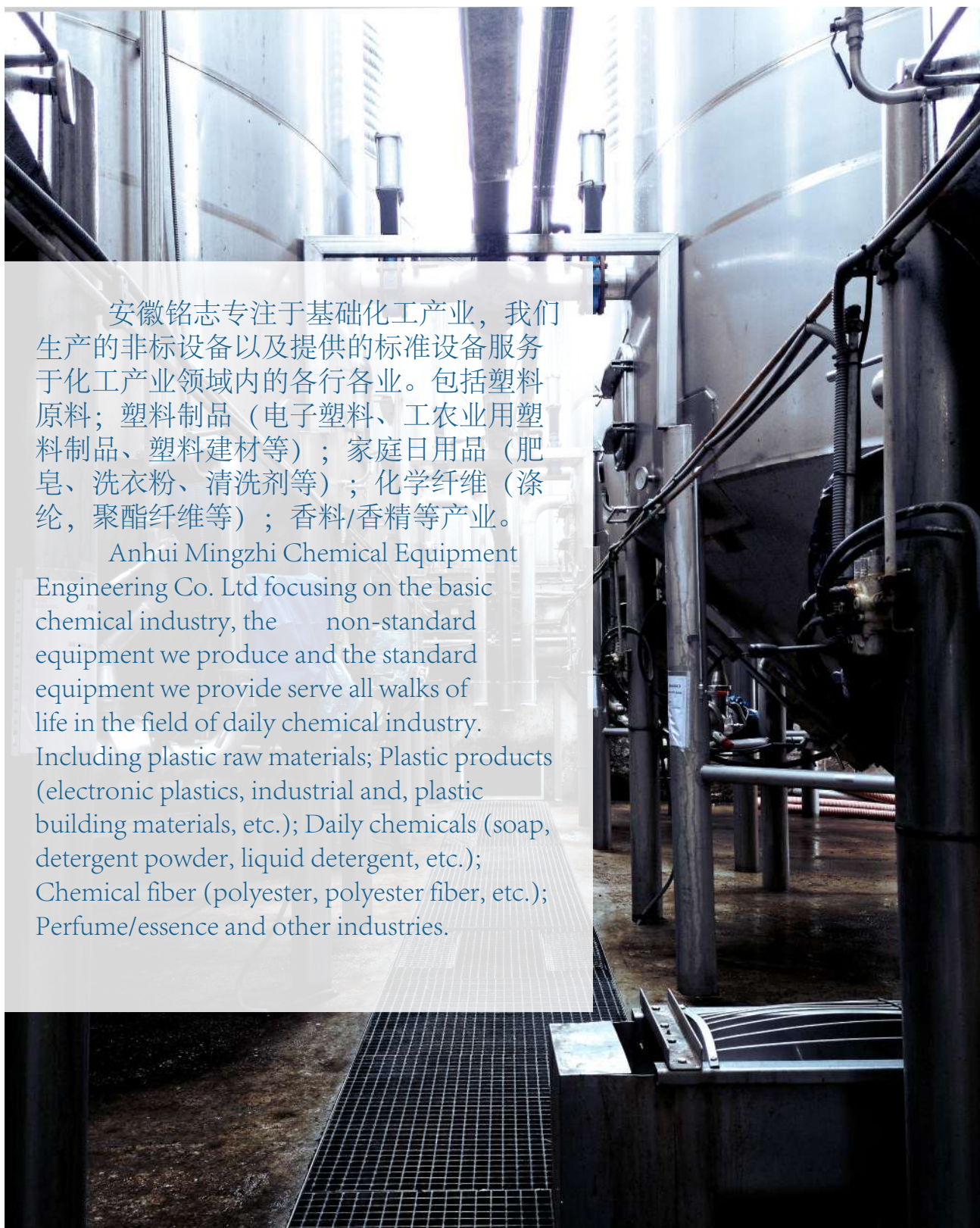
“和安徽铭志化工设备工程有限公司合作是我们的荣幸；我们想要谢谢你的认真工作的态度和优异的服务。我们期待日后还能和你们再次合作”

**万福公司— 沙特阿拉伯**

.....





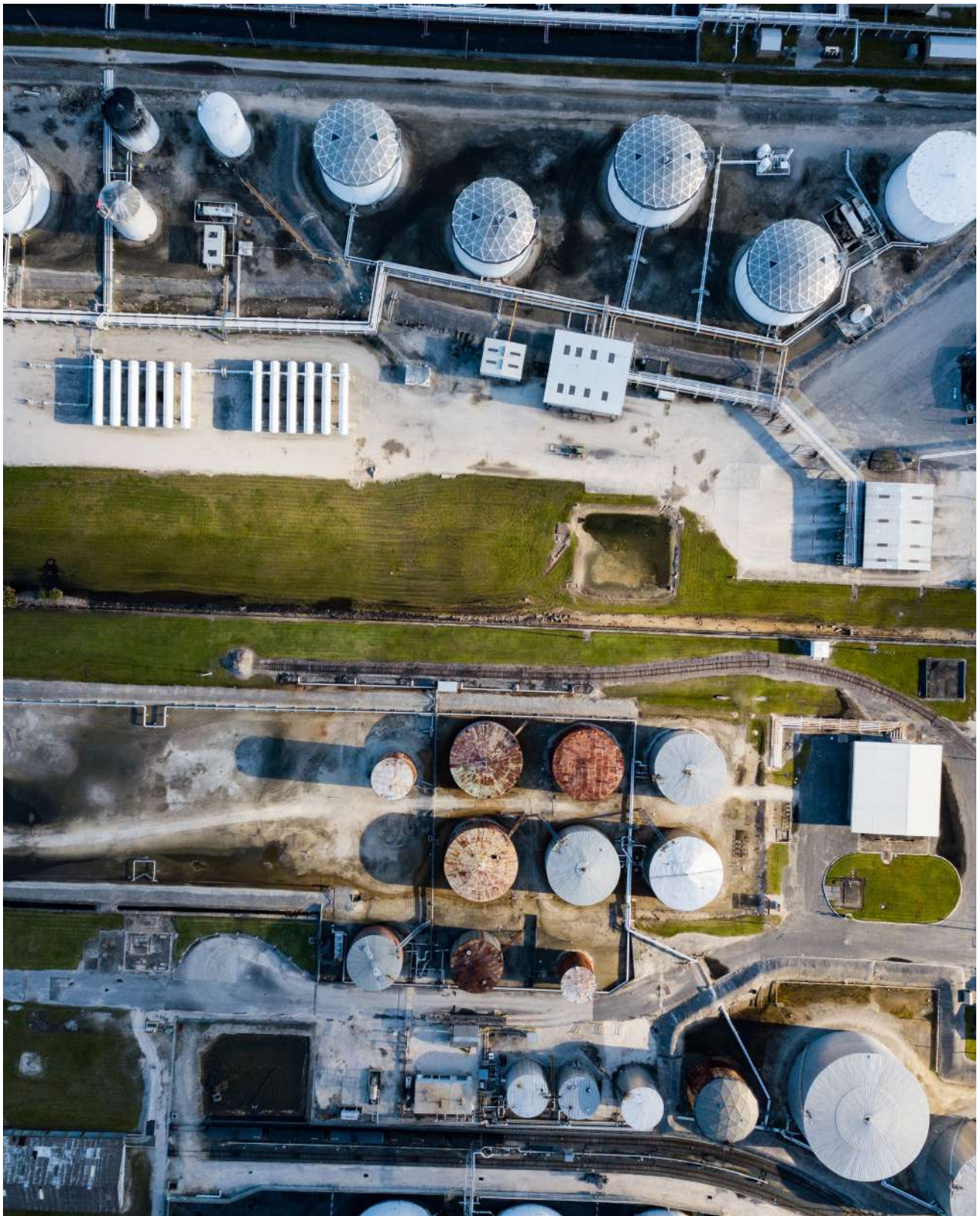


安徽铭志专注于基础化工产业，我们生产的非标设备以及提供的标准设备服务于化工产业领域内的各行各业。包括塑料原料；塑料制品（电子塑料、工农业用塑料制品、塑料建材等）；家庭日用品（肥皂、洗衣粉、清洗剂等）；化学纤维（涤纶，聚酯纤维等）；香料/香精等产业。

Anhui Mingzhi Chemical Equipment Engineering Co. Ltd focusing on the basic chemical industry, the non-standard equipment we produce and the standard equipment we provide serve all walks of life in the field of daily chemical industry. Including plastic raw materials; Plastic products (electronic plastics, industrial and, plastic building materials, etc.); Daily chemicals (soap, detergent powder, liquid detergent, etc.); Chemical fiber (polyester, polyester fiber, etc.); Perfume/essence and other industries.



# Chemical industry 化工行业







安徽铭志深耕日化行业多年，我们生产的非标设备以及提供的标准设备服务于日化行业领域内的各个方面。包括洗衣粉成套设备以及生产线的设计/制作/生产/安装/调试，液体洗涤剂成套设备以及生产线的设计/制作/生产/安装/调试；我们同时也销售单体非标设备以及标准设备。此外，我们也熟知并提供生产泡花碱，磺化的设备以及成套生产线；我们同时还提供除尘系统设备的制作和安装。安徽铭志在日化行业内有近100家国内外的服务/合作伙伴，除中国大陆地区的联合利华，立白等，我们的客户还遍及亚洲，非洲，中东地区如缅甸，泰国，坦桑尼亚，乌兹别克斯坦，沙特阿拉伯以及伊朗等。我们的专业得到所有客户的认可并被给予了高度的肯定和赞扬。

Anhui Mingzhi has been deeply engaged in the daily chemical industry for many years. The non-standard equipment we produce and the standard equipment we provide serve all aspects of the daily chemical industry. Including the design/manufacture/production/installation/commissioning of the complete set of detergent powder equipment and the production line, and the design/manufacture/production/installation/commissioning of the complete set of liquid detergent equipment and the production line; We also sell individual non-standard equipment and standard equipment. In addition, we are also familiar with and provide equipment and complete set of production lines for the production of sodium silicate and sulfonation; We also provide the production and installation of dust removal system & equipment. Anhui Mingzhi has nearly 100 service/partners at home and abroad in the daily chemical industry. In addition to those in Chinese Mainland, like Unilever, Libai etc., our customers are also all over Asia, Africa, the Middle East, such as Myanmar, Thailand, Tanzania, Saudi Arabia, Uzibikstan and Iran. Our profession has been recognized by all customers and highly praised.



# Metal Processing 金属加工

安徽铭志也致力于金属加工行业，我们的金属加工服务于工业，化工行业以及日化行业等不同领域。非标设备加工及其配件的加工和精加工也是我们长项所在。

Anhui Mingzhi is also committed to the metal processing industry. Our metal processing services are in different fields such as industry, chemical industry and daily chemical industry. The processing and finishing of non-standard equipment and its accessories are also our strengths.



# Equipment Fabrication & Installation / EPC

## 设备制造安装/项目总承包



机械过滤器：取消传统式老化过滤装置，采用新型机械式过滤，提高过滤效率，可以有效过滤包装绳和物料包装袋。便于快捷地拆卸清理。内附网孔板，可根据实际情况调节网孔大小

技术参数：5-50立方米/小时

Mechanical filter: Cancel the traditional aging filter device, adopt a new type of mechanical filter, improve the filtration efficiency, can effectively filter the packaging rope and material packaging bags. Easy to disassemble and clean up quickly. With a mesh plate inside, the mesh size can be adjusted according to the actual situation

Specs: 5-50 cubic meters/hour

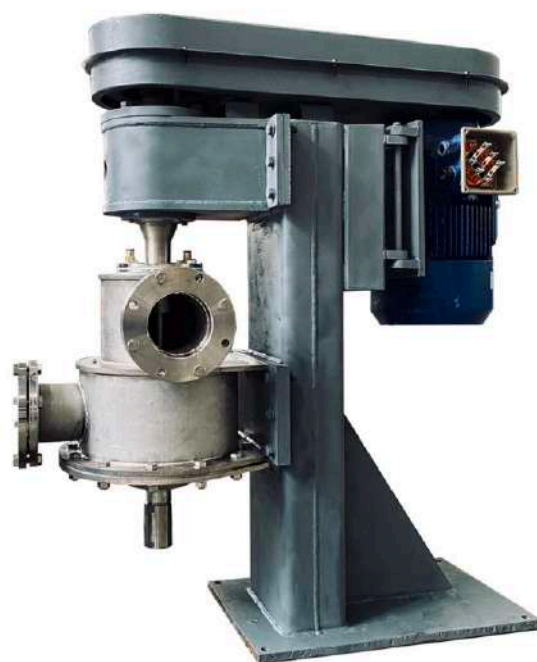
### Mechanical Filter 机械过滤器

料浆破碎机：替换老式卧式均质泵，便于拆卸清理；高速离心经过网孔板将料浆称破碎及过滤成2.5毫米的均质料浆。生产过程中可有效避免喷枪阻塞，内附网孔板，网孔直径可根据用户要求选择，区间为2.0毫米-3.0毫米。

技术参数：5-50立方米/小时

Mechanical filter: Cancel the traditional aging filter device, adopt a new type of mechanical filter, improve the filtration efficiency, can effectively filter the packaging rope and material packaging bags. Easy to disassemble and clean up quickly. With a mesh plate inside, the mesh size can be adjusted according to the actual situation

Specs: 5-50 cubic meters/hour



### Slurry crusher 料浆破碎机

Description 描述



# Equipment Fabrication & Installation / EPC

## 设备制造安装/项目总承包



**Ingredients Tank 配料锅**

配料锅：将称量好的固体/液体物料搅拌混合，形成洗衣粉料浆，Lightnin搅拌的特点就是降低功耗（约30%），混合效果比传统的桨式搅拌更充分/均匀

技术参数：3-20立方米（常见），直径 1m-4m

Ingredients tank: Stir and mix the weighted solid/liquid material to form a detergent powder slurry. The characteristic of Lightnin mixing is to reduce power consumption by approximately 30%, and the mixing effect is more sufficient and uniform than traditional paddle mixing.

Specs: 3-20 cubic meters (normally), diameter 1m-4m.

### Description 描述

连续式后配混合器：与基粉称及其他失重称连锁，可根据基粉称出料比重自动调节旋转速度；混合失重称称量好的酶，色粒，香精等物料。本台设备的内衬螺旋式挡板可充分混合后配所加物料，不易出现结块粉等问题。

技术参数：2-20吨，直径800-2000 mm

Continuous post-blending mixer: interlocked with the base powder scale and other weight-loss scales, the rotation speed can be automatically adjusted according to the specific gravity of the base powder weighing; mix the weight-loss weighed enzyme, color particles, flavor and other materials. The lining spiral baffle of this equipment can mix the added materials thoroughly, and it is not easy to cause problems such as caking.

Specs: 2-20 tons, diameter 800-2000 mm

### Description 描述



**Continuous Post-Blending Mixer**  
连续式后配混合器

# Equipment Fabrication& Installation / EPC

## 设备制造安装/项目总承包



**Aging Tank 老化罐**

老化罐：储存配料锅已搅拌完的成品料浆，为配料锅连续配料腾出位置。使未完全反应的物料充分反应，老化

技术参数：5-40立方米

Aging tank: It stores finished slurry that has been stirred in the batching pot, to make room for continues batching. Make the incompletely reacted fully react and age

Specs: 5-40 cubic meters

Description 描述

旋风分离器：亦是尾气系统，降低火灾风险（无布袋燃烧风险），尾气先经干式旋风分离，收集细粉，在指定位置段直接进塔；无需经过配料锅重新配料，降低能耗。处理过的尾气再经湿式旋风风内的喷雾装置处理细小颗粒，使拍出的尾气达标。

技术参数：5万风量-15万风量

Cyclone seperator: aka exhaust system. Replace old type with dry/wet cyclone seperator. Reduce fire risk(no bag burning risk). The tail gas is first seperated by dry cyclone to collect fine powder and enter the tower at a specific location, no need to enter the batching pot for re-dosing to reduce energy consumption. Treated exhaust gas then treated in wet cyclone to reach the standard.

Specs: 50,000 air volum- 150,000 air volume

Description 描述



**Exhaust dry/wet cyclone separator**  
尾气干式/湿式旋风分离器



# Equipment Fabrication & Installation / EPC

## 设备制造安装/项目总承包



**High temperature butterfly valve**  
高温蝶阀

高温蝶阀：正常操作温度为680度，允许最高连续使用温度720℃，最高超温800℃。高温蝶阀阀体由钢板和锻件法兰焊接而成。阀杆为整体锻件结构，由外部轴承座支撑，并通过二端销连接带动阀瓣转动。2个半圆阀座前后错开，与阀瓣呈对称式分布，结合对称式流线型结构的阀瓣，使阀门具有良好的流通性能。3组填料密封，外加密封剂和吹扫二道辅助密封组成了高可靠性阀杆填料密封系统

技术参数：3-20立方米（常见），直径 1m-4m

High temperature butterfly valve: The normal operating temperature of the unit is 680 °C, the maximum allowable continuous use temperature is 720 °C, and the maximum overtemperature is 800 °C. High temperature butterfly valve body is welded by steel plate and forging flange. The valve stem is an integral forging structure, supported by an external bearing seat, and is connected by a two-end pin to drive the valve disc to rotate. The two semicircular valve seats are staggered back and forth, and are symmetrically distributed with the valve disc. Combined with the valve disc with a symmetrical streamlined structure, the valve has a good flow performance. 3 sets of packing seals, plus sealant and two auxiliary purge seals form a high-reliability valve stem packing seal system

Specs: Below 1800 degrees, 900mm-2000mm

### Description 描述

除尘系统：采用区域式除尘，根据洗衣粉工艺可分为：前配料除尘，后配料除尘，包装除尘。一方面满足环境保护标准，另一方面确保工人操作环境的安全性。收集细粉，减少物料及成品消耗。分区式除尘更具有针对性，同时降低功耗。该套系统同时也可用于其他行业的粉尘处理。

技术参数：Q=1，000-20，000立方

Dust removal system: adopts regional dust removal. According to the washing powder technology, it can be divided into: dust removal from the pre blending, dust removal from the post blending, and dust removal from the packaging. On one hand, it meets environmental protection standards, on the other hand, it ensures the safety of workers' operating environment. Collect fine powder to reduce the consumption of materials and finished products. Partitioned dust removal is more targeted and reduces power consumption. This set of system can also apply to dust treatment for other industries.

Specs: Q=1,000-20,000 cubic meters/hour



**Dust removal system 除尘系统**

Description 描述

# Equipment Fabrication & Installation / EPC

## 设备制造安装/项目总承包



**Post-blending weight loss scale**  
后配失重称



后配失重称：取代老式皮带称，采用PLC控制程序使失重称所出物料恒定且与基粉失重称联锁，可根据基粉失重称产量自动调节。因输送及称量物料不同，底部出料系统可分为：

1. 皮带输送
2. 螺旋输送
3. 计量泵（仅针对于液体物料）。

技术参数：0kg-200kg（小料：色粒酶等添加量较少的物料）；  
5-15吨（基粉称）；  
0-2吨（纯碱沸石）。

Post-blending LIW: instead of the old belt scale, the PLC control program is used to make the material of the weight loss scale constant and interlock with the base powder weight loss scale, which can automatically adjust the output according to the base powder weight loss. Due to the different conveying and weighing materials, the bottom discharge system can be divided into:

1. Belt conveying
2. Screw conveying
3. Metering pump (only for liquid materials).

Specs:  
0kg-200kg (small materials: color granulate and other materials with less addition amount);  
5-15 tons (basic powder);  
0-2 tons (soda ash zeolite).

Description 描述



# Equipment Fabrication & Installation / EPC

## 设备制造安装/项目总承包



**Powder receiving station 接粉站**

皮带输送机：可根据要求定制输送量，输送长度和速度，皮带宽度。洗衣粉常用为封闭式皮带输送机，出料端配套刮粉器，有效防止皮带沾料。进出口与除尘器联锁，有效防止粉尘扩散。底部配套基粉盒，方便清理及收集物料。

技术参数：0-30吨/小时米/小时

Belt conveyor: the conveying capacity, conveying length and speed, and belt width can be customized according to requirements. Washing powder is commonly used as a closed belt conveyor, with a scraper at the discharge end to effectively prevent the belt from being stained. The inlet and outlet are interlocked with the dust collector to effectively prevent the spread of dust. The base powder box is equipped at the bottom, which is convenient for cleaning and collecting materials.

Specs: 0-30 tons/hour

接粉站：使用人工粉车，底部配套地称与仪表联锁，控制出粉放料阀，可根据使用要求设定单次出粉量；可全自动放料也可半自动放料。粉车进料口为机械盖板与接粉站内开盖硬件配套，防止物料输送过程中杂质掉落。

技术参数：0-20吨/小时

Powder receiving station: Use man powder truck, the bottom is matched with the scale and the instrument is interlocked, and the powder discharge valve is controlled. The single powder output can be set according to the requirements of use; it can be fully automatic or semi-automatic. The powder truck feed inlet is equipped with a mechanical cover plate and the opening hardware in the powder receiving station to prevent impurities from falling during the material conveying process.

Specs: 0-20 tons/hour

### » Description 描述



Description 描述

**Belt conveyor 皮带输送机**

# Equipment Fabrication & Installation / EPC

## 设备制造安装/项目总承包

### MYANMAR Unilever Detergent Powder Modification 8T/H to 10T/H

缅甸联合利华8t/h改10t/h洗衣粉改造项目





# Equipment Fabrication & Installation / EPC 设备制造安装/项目总承包

**IRAN 10T/H Detergent Powder**  
伊朗Pakshoo年产15万吨洗衣粉项目

**Chacha Food (THAILAND) Dust Removal System**  
泰国洽洽除尘系统





# Equipment Fabrication & Installation / EPC 设备制造安装/项目总承包

## IRAN 15T/H Detergent Powder Project 伊朗15T/H洗衣粉项目





# Equipment Fabrication & Installation / EPC 设备制造安装/项目总承包

**UZBEKISTAN 3T/H Powder Project**  
乌兹别克斯坦3T/H洗衣粉项目



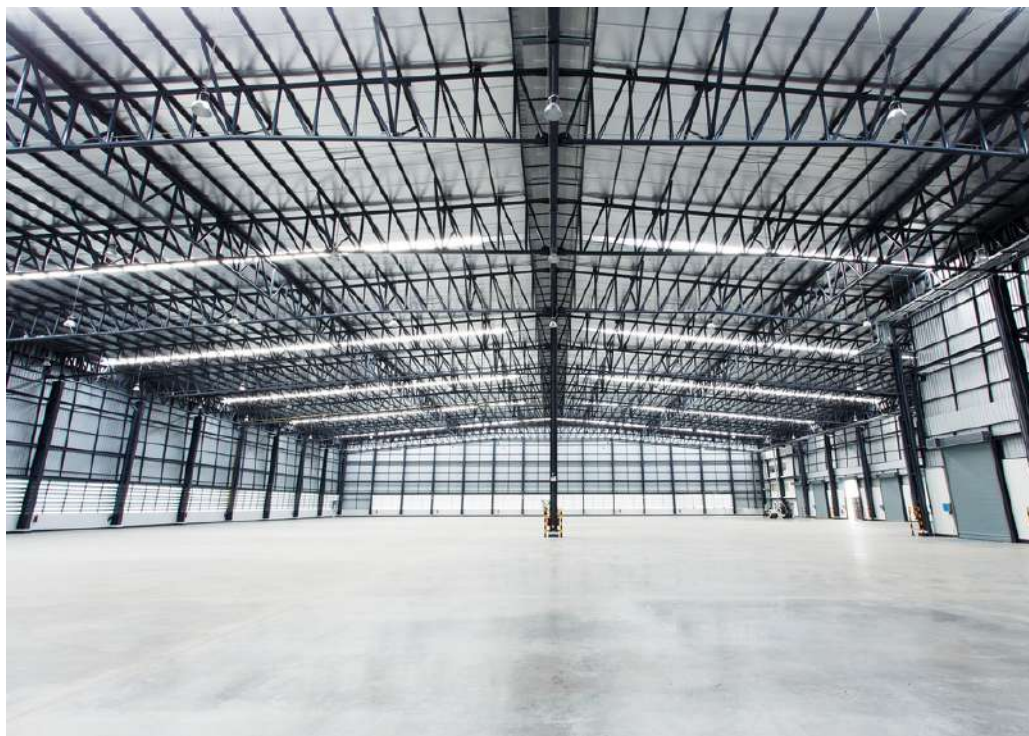
**MOZAMBIQUE 5T/H Powder Project**  
莫桑比克5T/H洗衣粉项目





# Steel structure plant & Building design and construction

## 钢结构厂房和建筑设计建造





# Steel structure plant & Building design and construction

## 钢结构厂房和建筑设计建造



建筑设计以及钢结构厂房设计建造是我们在为客户设计成套生产线之前必要的工作，为了有效的设计出更符合客户要求，同时为客户带来最大效益又节约成本的生产线，优异的钢结构厂房的设计与建造至关重要。梁柱拼接点的设计，支撑的设计，以及钢结构厂房设计需要注意的防火，防潮，通风，承重以及保温等要素都是关键而值得注意的。安徽铭志为不同客户的多个项目在不同的地区设计建造过数不胜数的钢结构厂房；它们为整条生产线的顺利运作奠定了不可磨灭的基础。由于厂房和项目的生产线均来自安徽铭志，由此保证了我们设计的生产线及设备能以最佳的方式定位在最佳的指定地点，在保证安全，卫生的前提下，最大效率的利用厂房内的空间。

Architectural design and steel structure plant design and construction are the necessary work before we design a complete set of production lines for customers. In order to effectively design a production line that is more in line with customers' requirements, while bringing maximum benefits to customers and saving costs, the design and construction of excellent steel structure plant is crucial. The design of the beam-column joint, the design of the support, and the fire prevention, moisture prevention, ventilation, load bearing and thermal insulation that need to be paid attention to in the design of the steel structure plant are key and noteworthy. Anhui Mingzhi has designed and built numerous steel structure plants in different regions for multiple projects of different customers; They have laid an indelible foundation for the smooth operation of the entire production line. Since the plant and the production line of the project are from Anhui Mingzhi, it is ensured that the production line and equipment designed by us can be positioned in the best designated place in the best way, and the space in the plant can be used as efficiently as possible under the premise of ensuring safety and sanitation.

# Raw Material Procurement

## 原材料采购

### Detergent powder raw material 洗衣粉原材料

#### Detergent powder 洗衣粉:

1. **Sodium sulfate:** It is used to be neutralized with Alkyl benzene sulphonic acid, and then generates sodium alkyl benzene sulphonate (LAS).

硫酸钠：它通常被烷基苯磺酸中和，然后生成烷基苯磺酸钠（LAS）。

2. **Sodium carbonate:** A kind of builder, it can adjust the PH value of the detergent solution, keep the solution alkaline. It has certain washing effect to oil stain at the same time. Overuse will damage skin and eyes.

碳酸钠：一种助洗剂，可以调节洗涤剂溶液的PH值，保持溶液呈碱性。同时对油渍具有一定的洗涤效果。过度使用会损坏皮肤和眼睛。

3. **Zeolite:** It can only replace the functions of most STPP softened water, but no other washing functions. And it has poor solubility, keep suspended state in water. Easy to be adsorbed on the surface of clothes.

沸石：它只能替代大多数STPP软化水的功能，而不能替代其他洗涤功能。而且它的溶解性差，在水中保持悬浮状态。易于吸附在衣服表面。

4. **Sodium silicate:** A kind of builder. It has excellent functions such as alkaline buffer, wetting, adsorption and redeposition etc. It also can help the detergent powder has a certain strength and keep granular, but overuse may cause poor solubility of detergent powder.

硅酸钠：助洗剂。它具有优异的功能，例如碱性缓冲剂，润湿剂，吸附剂和再沉积剂等。它还可以帮助洗衣粉具有一定的强度并保持颗粒状，但过度使用可能会导致洗衣粉溶解性差。

5. **Sodium tripolyphosphate (STPP):** A kind of organic chelating agent with the function of chelating the metal ion in detergent solution. It can also softening the water and preventing the powder from agglomeration.

三聚磷酸钠（STPP）：一种有机螯合剂，具有螯合洗涤剂溶液中金属离子的功能。它还可以软化水并防止粉末结块。

6. **Color speckles:** An ornament of detergent powder, it helps the detergent powder appearance to look better. The enzymes used in which speckles are mostly white, almost invisible.

色斑：洗衣粉的装饰品，可以帮助洗衣粉看起来更好。斑点多为白色的酶，几乎看不见。

#### Wet foaming alkali 湿法泡花碱:

1. **Sodium hydroxide:** Caustic soda is used to neutralize excess fuming sulfuric acid after vulcanization reaction.

氢氧化钠：硫化反应后，使用苛性钠中和过量的发烟硫酸。

2. **Quartz sand:** The color of quartz sand is milky white, or colorless and translucent, with a density of 2.65

石英砂：石英砂的颜色为乳白色或无色半透明，密度为2.65



# Raw Material Procurement

## 原材料采购

### Detergent powder raw material 洗衣粉原材料

#### Liquid detergent液洗:

1. **Sulfonic acid:** Sulfonic acid is mainly used in detergents to form sodium sulfonate, which is used to remove oil stains.

磺酸：磺酸主要用于洗涤剂中形成磺酸钠，用于去除油渍。

2. **Sodium hydroxide:** Caustic soda is used to neutralize excess fuming sulfuric acid after vulcanization reaction.

氢氧化钠：硫化反应后，使用苛性钠中和过量的发烟硫酸。

3. **Sodium Alcohol Ether Sulphate (AES):** As a non-ionic surfactant, it has emulsification, foaming and decontamination functions.

硫酸钠乙醇醚（AES）：作为一种非离子型表面活性剂，具有乳化，发泡和去污功能。

4. **Aeo-9:** AKA Fatty alcohol polyoxyethylene ether, a type of non-ionic surfactant. The active matter content:  $\geq 99\%$  Appearance: colorless transparent liquid, white paste (25°C). Its PH value is between 6 and 7.

Aeo-9：又称脂肪醇聚氧乙烯醚，一种非离子表面活性剂。活性物含量： $\geq 99\%$  外观：无色透明液体，白色糊状物（25°C）。PH值在6到7之间。

#### Sulfonic acid 磺酸:

1. **Sodium alkylbenzenesulfonate (LAB):** Solid, soluble in water, active content 30%-40%, pH value is about 8, with surface activity of decontamination, wetting, foaming, emulsification and dispersion. Sodium alkylbenzene sulfonate has a significant decontamination effect on granular dirt, protein dirt and oily dirt. It is particularly effective for washing granular dirt on natural fibers. The detergency increases with the increase of washing temperature. The effect is higher than that of non-ionic surfactants, and the foam is rich. Sodium alkyl benzene sulfonate has the properties of decontamination, wetting, foaming, emulsification and dispersion. Its biodegradability is  $>90\%$ , so it can be used directly in the formulation of civil and industrial detergents.

烷基苯磺酸钠（LAB）：固体，溶于水，活性成分为30%-40%，pH值约为8，具有去污，润湿，发泡，乳化和分散的表面活性。烷基苯磺酸钠对粒状污垢，蛋白质污垢和油性污垢具有显著的去污效果。它对清洗天然纤维上的颗粒污垢特别有效。洗涤力随洗涤温度的升高而增加。该效果高于非离子表面活性剂，并且泡沫丰富。烷基苯磺酸钠具有去污，润湿，发泡，乳化和分散的特性。它的生物降解性 $>90\%$ ，因此可以直接用于民用和工业洗涤剂的配方。

2. **Sulphur:** Industrial sulfur is yellow or light yellow, with lumps, powder, granules or flakes, etc. It is most stable below 95.5°C, density 2.1g/cm<sup>3</sup>, melting point 112.8°C, boiling point 445°C

硫：工业硫为黄色或浅黄色，有块状，粉末状，颗粒状或片状等。在95.5°C以下最稳定，密度2.1g / cm<sup>3</sup>，熔点112.8°C，沸点445°C

## We Proudly Serve Our Domestic & Global Clients

我们骄傲的服务于国内客户和国际客户



We proudly serve our customers all around the world with over 200 projects. For domestic market, we have built strong relationships with multiple enterprises such as Liby, ChaCheer and Nanfeng. etc. Globally, it is our pleasure to serve world leading companies in daily chemical industry like Unilever, Continental and Pakshoo. etc. The key to our business relationships are mutual trust, professionalism, sincerity and profitability. We looking forward to hear more from our future clients.

我们自豪地已经为来自全球不同地区的客户提供了累计约200多个项目的服务。对于国内市场，我们与立白，恰恰和南风集团等多个公司建立了牢固的关系。而在全球范围内，我们很高兴为联合利华，大陆集团和Pakshoo等日用化工行业的世界领先公司提供服务。我们坚信，与客户优异关系的关键是相互信任，专业，真诚和彼此共赢；这也是一直以来我们服务于客户的准则和基础。我们期待你的到来。



客户至上 服务真诚  
Customer first, sincere service

## Head Office

### Factory Address:

Lianhe Village Committee, Zaojia Township,  
Changfeng County, Hefei, Anhui 230001

Email: [lu.horse@hotmail.com](mailto:lu.horse@hotmail.com)

Website: [anhuimingzhi.com](http://anhuimingzhi.com)

Tel: 86-138 6670 1231

工厂地址：中国，安徽，合肥，长丰县造甲乡联合村村委会旁

邮箱地址: [lu.horse@hotmail.com](mailto:lu.horse@hotmail.com)

网站: [anhuimingzhi.com](http://anhuimingzhi.com)

电话: 86- 138 6670 1231

WhatsApp: 86- 138 6670 1231

### Office Address:

Wujinerchang Fujian building A1 1701, North Fuyang  
Rd, Hefei, Anhui, China.

Email: [lu.horse@hotmail.com](mailto:lu.horse@hotmail.com)

Website: [anhuimingzhi.com](http://anhuimingzhi.com)

Tell: 86- 138 6670 1231

办公地址：中国，安徽，合肥，阜阳北路 五金二厂  
复建楼A1栋1701

邮箱地址: [lu.horse@hotmail.com](mailto:lu.horse@hotmail.com)

网站: [anhuimingzhi.com](http://anhuimingzhi.com)

电话: 86- 138 6670 1231

WhatsApp: 86- 138 6670 1231

**Anhui Mingzhi Chemical Equipment Engineering CO.Ltd.**  
安徽铭志化工设备工程有限公司



